

PRESS FILE



SIMONE GUILLISSEN-HOA

24.04.24 - 22.09.24

C I.II.III.IV. A
Culture — Architecture

civa.brussels
Rue de l'Ermitage 55
1050 Bruxelles

CIVA presents the first monographic exhibition honoring the life, work, and legacy of the Chinese-born Belgian architect **Simone Guillissen-Hoa** (1916–1996). A proponent of modernist architecture, Guillissen-Hoa was one of the first women to establish an architecture firm in Belgium. Her career and personal life have consistently challenged the limits imposed by social conventions, gender norms, religious dogma and racial prejudices.

Simone Guillissen-Hoa is the architect of numerous buildings in Belgium, including La Maison de la Culture in Tournai, the sport Center of Jambes, the jewelry shop of Maison De Greef in Brussels (with Jacques Dupuis), as well as many private houses. Guillissen-Hoa formed deep and lasting connections with prominent Swiss avant-garde architects and artists such as Alfred Roth and Max Bill.

Her life spanned major events of the twentieth century: the onset of the Chinese Communist Revolution, World War II, the Belgian Resistance, and postwar reconstruction. In the 1950s, she was a member of the Soroptimist Association, a women's rights advocacy organization, and in the 1970s she became involved in the creation of the Belgian section of the International Union of Women Architects.

The exhibition both records her architectural projects and, through a wide array of archival materials, presents her reflections on architecture and her battles as a rare woman in her field.

Delving also into her artistic circles, composed of figures such as Léon Spilliaert, Enrico Castellani, Tapta, Henry van de Velde, and Nele van de Velde, the exhibition provides a captivating exploration of the influences, collaborations, and connections that shaped her artistic and intellectual journey.

A newly commissioned film, *Simone* (2024), by artists Eva Giolo and Aglaia Konrad takes center stage within the exhibition, showcasing the current state of several buildings designed by Guillissen-Hoa while focusing on their current adaptation, translation, and utilization of modernist forms and concepts.

With works by: Max Bill, Enrico Castellani, Pierre Cordier, Jacques Dupuis, Eva Giolo & Aglaia Konrad, Mayou Iserentant, Alfred Roth, Josine Souweine, Léon Spilliaert, and Tapta.

An extensive public program on feminism and architecture is being developed in collaboration with Apolline Vranken (research fellow at CIVA, 2023–2024). Contributors include: Beatriz Colomina, Bianca Felicori, Florencia Fernández Cardoso, Jane Hall, Sol Pérez Martínez, Lucía C. Pérez Moreno, Léa-Catherine Szacka and many others.

Curated by Silvia Franceschini and Yaron Pesztat

ARTISTIC DIRECTOR:

Nikolaus Hirsch

SECRETARY GENERAL:

Jeremy Uhr

CURATORS:

Silvia Franceschini, Yaron Pesztat

RESEARCH ASSOCIATE:

Apolline Vranken

EXHIBITION ARCHITECTURE:

Pauline Clarot

PRESS:

Valérie Roucou

v.roucou@civa.brussels

T. +32 2 642 24 52

**An exhibition organized by CIVA with the support of
Région de Bruxelles-Capitale, urban.brussels**

MEDIAPARTNERS:

Bruzz, Le Soir, A+

Simone Guillissen-Hoa at her
drawing table
1946

© CIVA Collections, Brussels



The Hoa family in Beijing
Ca. 1919

© CIVA Collections, Brussels



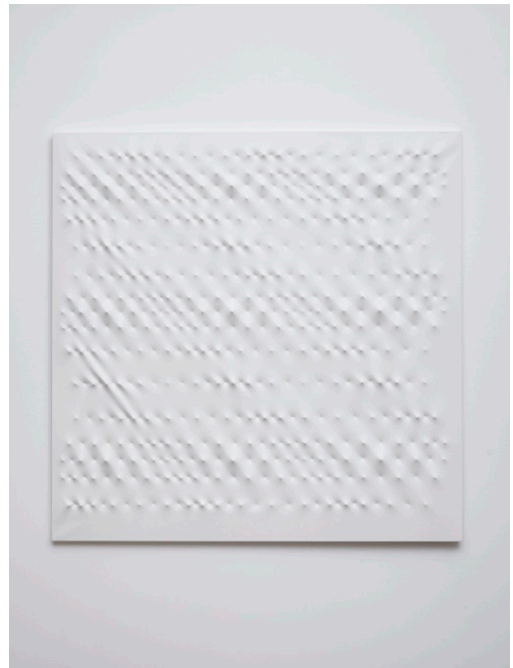
© Film still by Eva Giolo & Aglaia
Konrad, *Simone*, 2024



© Enrico Castellani
Superficie Bianca
1996

Acrylic on shaped canvas

Courtesy the artist and Galerie
Greta Meert



Simone Guillissen-Hoa

House Assche, formerly drève
des Lauriers, Brussels

model

1957

© CIVA Collections, Brussels -
Photo: Studio Minders



Simone Guillissen-Hoa

Maison d'Assche,
anciennement drève des
Lauriers, Bruxelles

1957

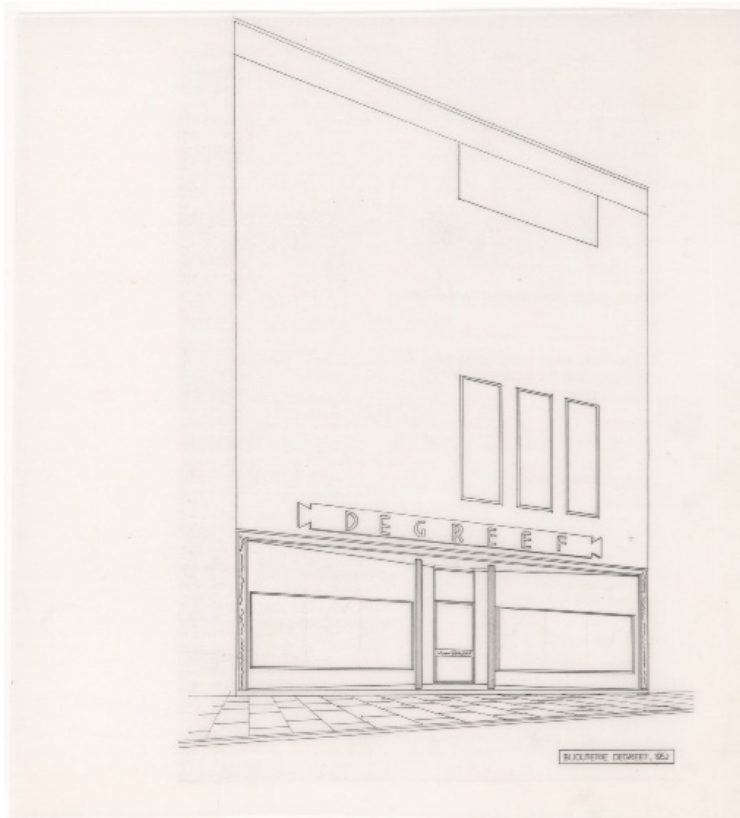
© CIVA Collections, Brussels -
Photo: Studio Minders



Simone Guillissen-Hoa,
Jacques Dupuis

Elevation project for
jewellery De Greef, rue
au Beurre I Boterstraat,
Brussels
1953

© CIVA Collections,
Brussels



Simone Guillissen-
Hoa, Jacques Dupuis

Jewellery De Greef, rue
au Beurre I Boterstraat,
Brussels
1953

© CIVA Collections,
Brussels - Photo:
Sergyels & Dietens



Simone Guillissen-Hoa

The sports center of
Jambes

1954

© CIVA Collections,
Brussels - Photo:
Alexis, CINEAR



Tapta

Textile wall installation in the
stairwell of the House For
Culture in Tournai

1982

CIVA Collections,
Brussels

© SABAM Belgium 2024



Simone Guillissen-Hoa
Ca. 1940

© Collection Jean-Pierre Hoa



Simone Guillissen-Hoa

House La Quinta, Baisy-Thy
Undated

© CIVA Collections, Brussels
Photo: Asselberghs & Embo,
Yves Auquier, Henri Coomans

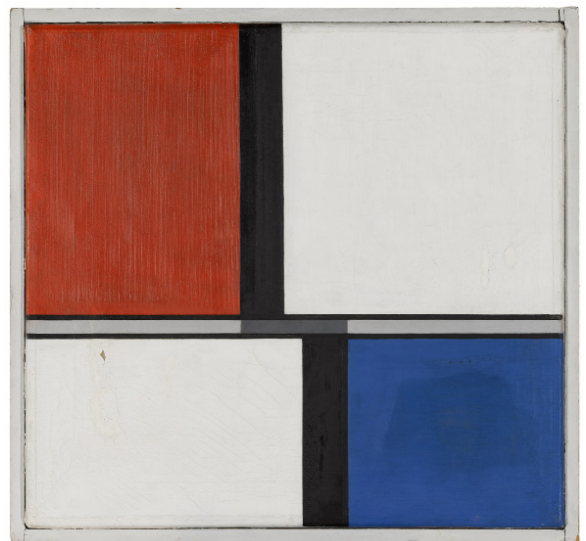


Alfred Roth

Composition 1935
dedicated to Simone
Guillissen-Hoa
1935

Peinture sur bois

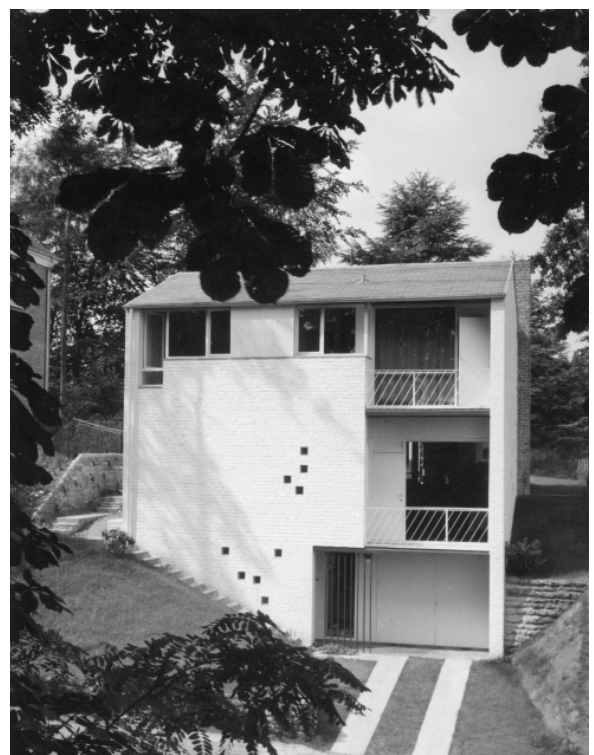
© Collection Jean-Pierre Hoa



Simone Guillissen-Hoa,
Jacques Dupuis

House Steenhout,
avenue Napoléon I
Napoleonlaan, Brussels
Bruxelles
1953

© CIVA Collections,
Brussels - Photo Graf



Tapta

Textile upholstery for Simone Guillissen-Hoa's
Diamond chairs (Harry Bertoia, 1952)

1979

Collection Jean-Pierre Hoa

© SABAM Belgium 2024



Max Bill

10 verschiedenartige konstruktionen
Exemplare 23/100
1941

Part of a set of 9 lithographs

1941

Collection Jean-Pierre Hoa

© SABAM Belgium 2024

